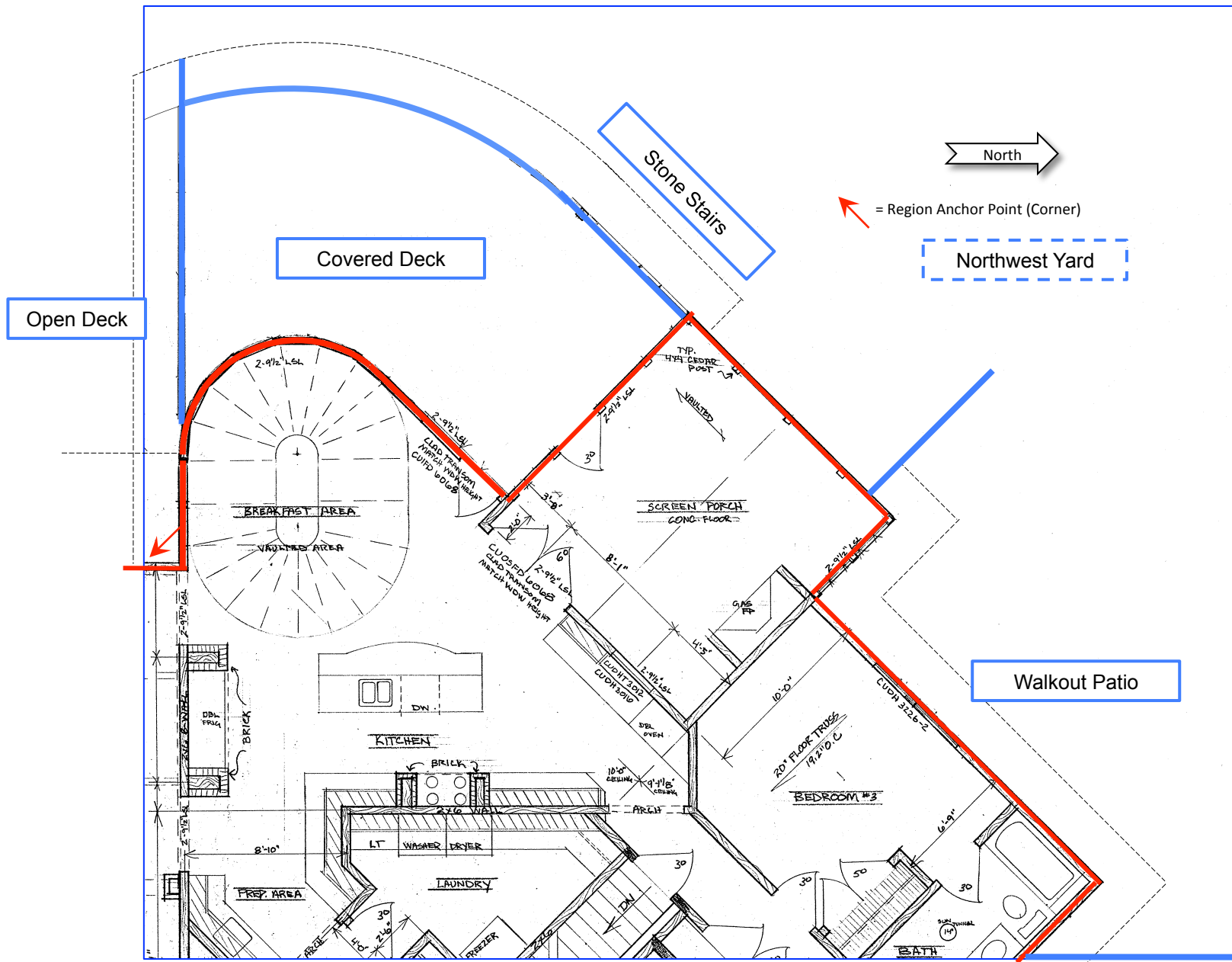





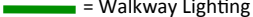






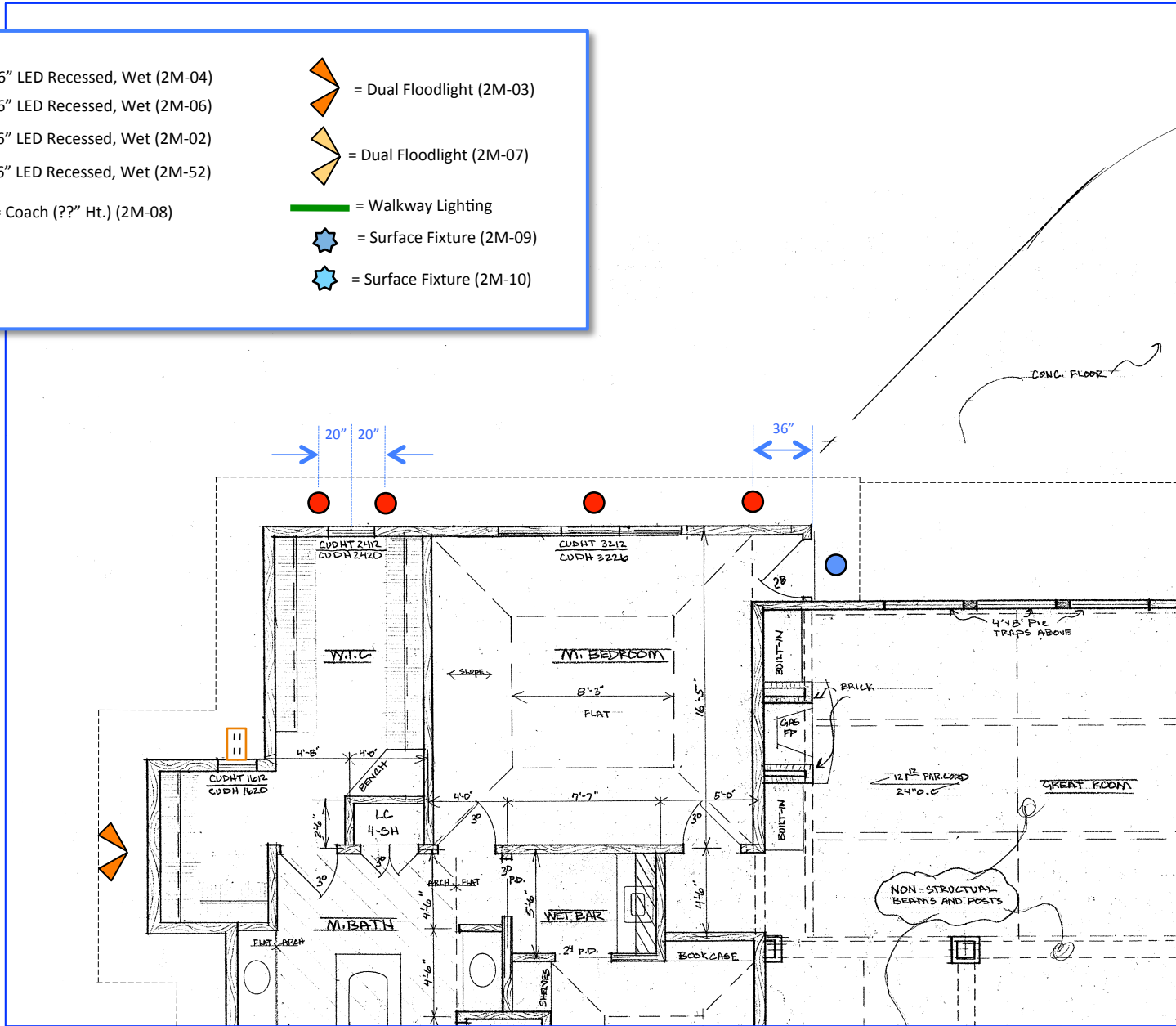
Scale: 8' per inch



Northwest Quadrant - Overview

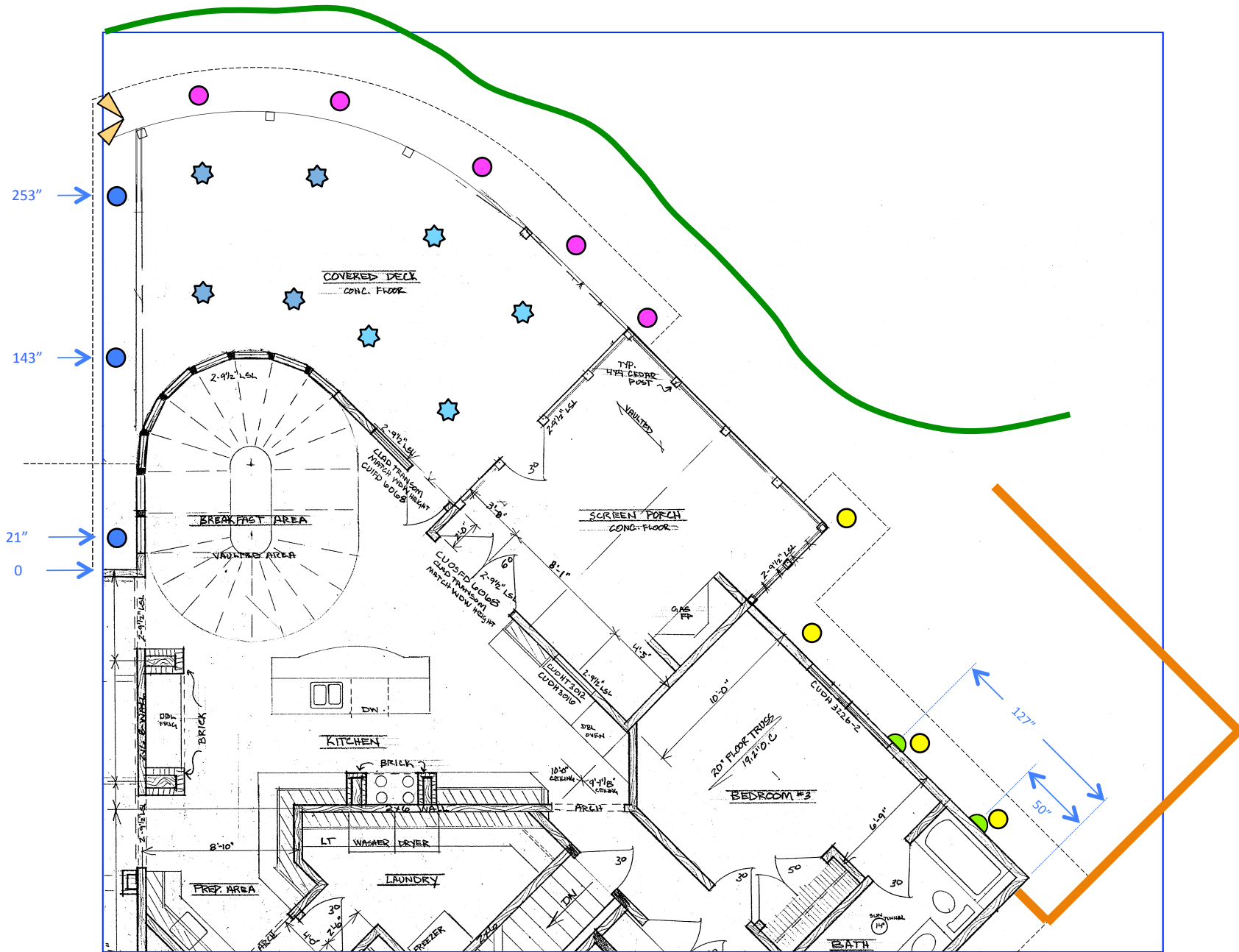
Scale: 8' per inch

	= 6" LED Recessed, Wet (2M-04)		= Dual Floodlight (2M-03)
	= 6" LED Recessed, Wet (2M-06)		= Dual Floodlight (2M-07)
	= 6" LED Recessed, Wet (2M-02)		= Walkway Lighting
	= 6" LED Recessed, Wet (2M-52)		= Surface Fixture (2M-09)
	= Coach (??" Ht.) (2M-08)		= Surface Fixture (2M-10)



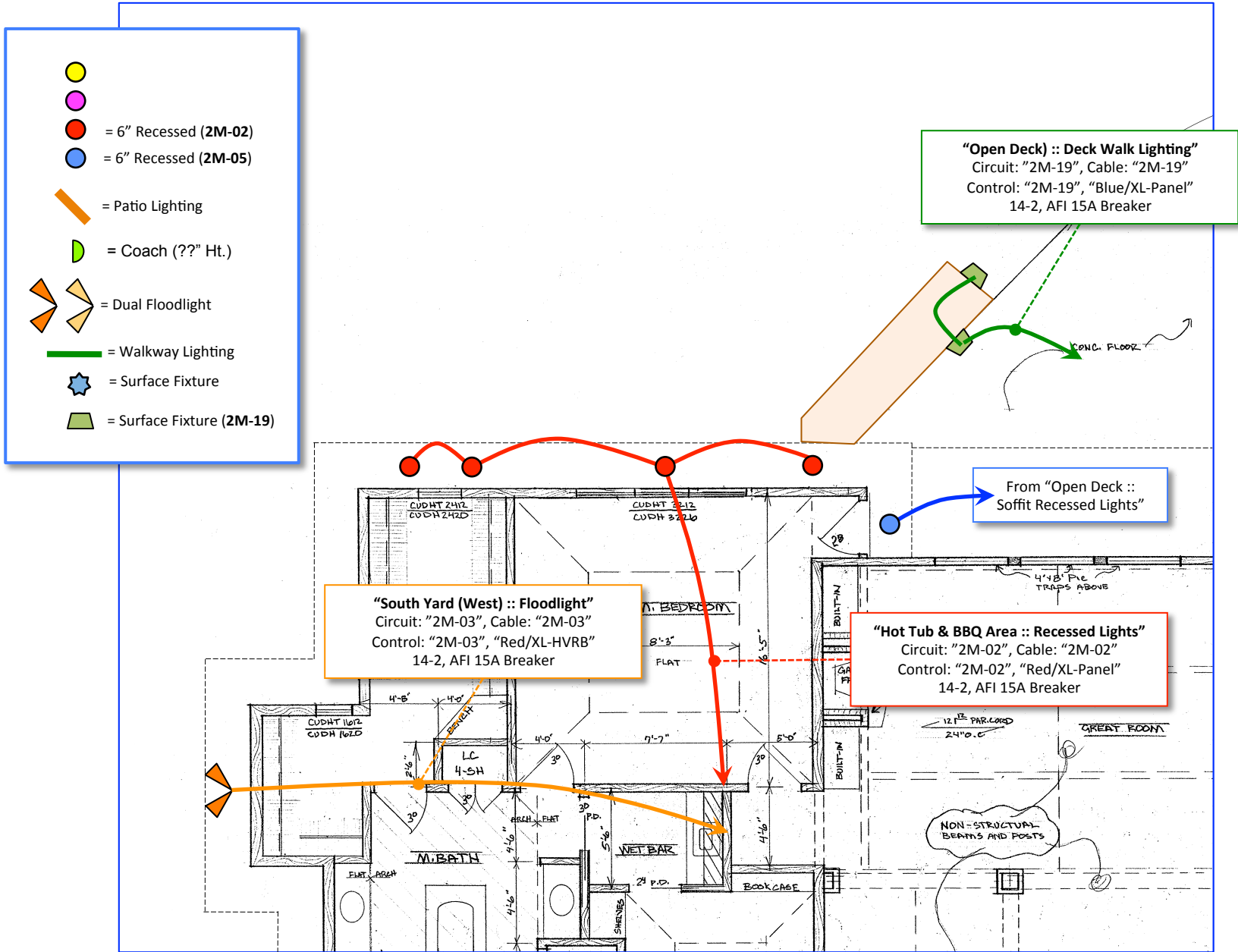
Southwest - Lighting

Scale: 8' per inch



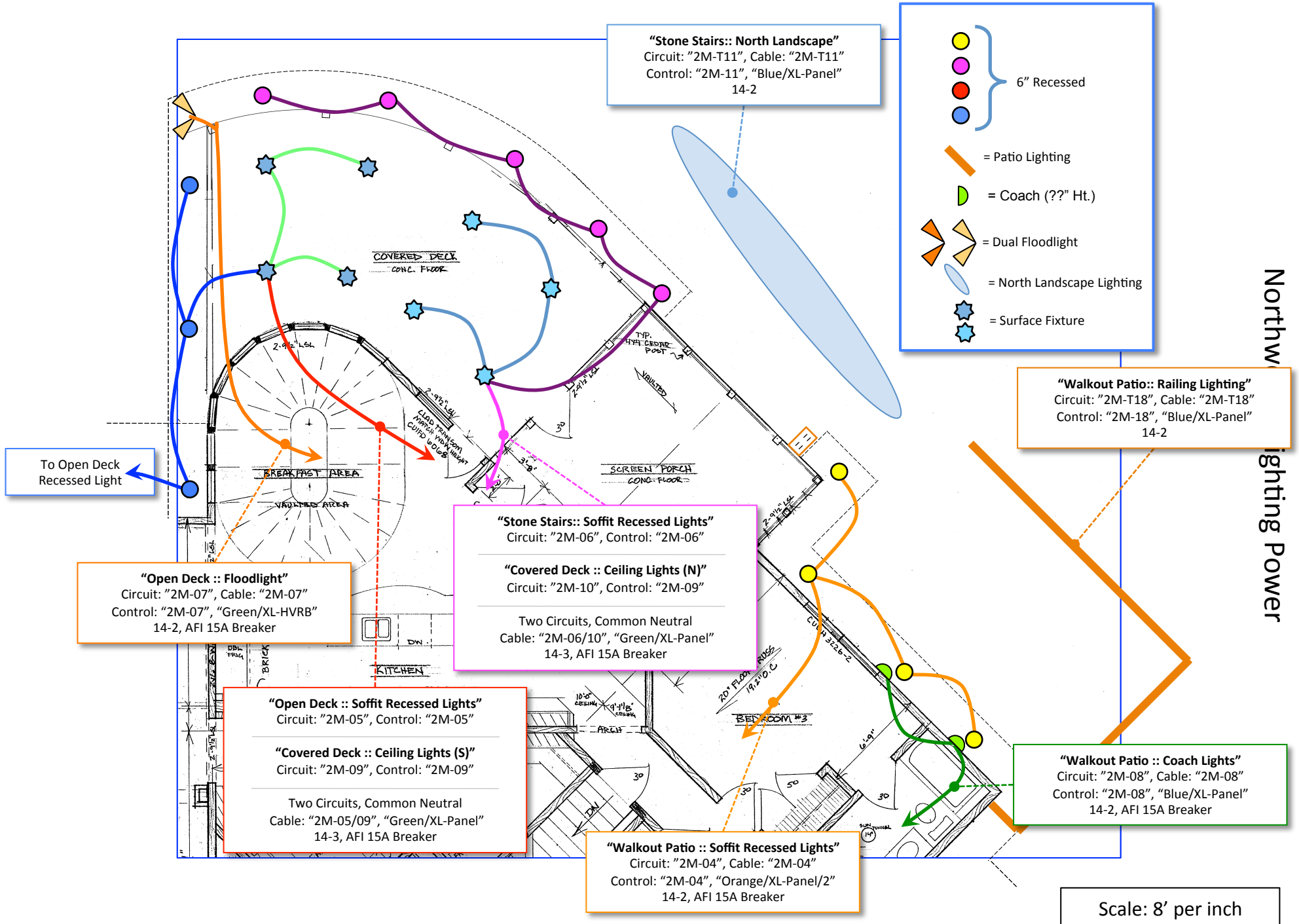
Northwest - Lighting

Scale: 8' per inch




Southwest – Lighting Power

Scale: 8' per inch



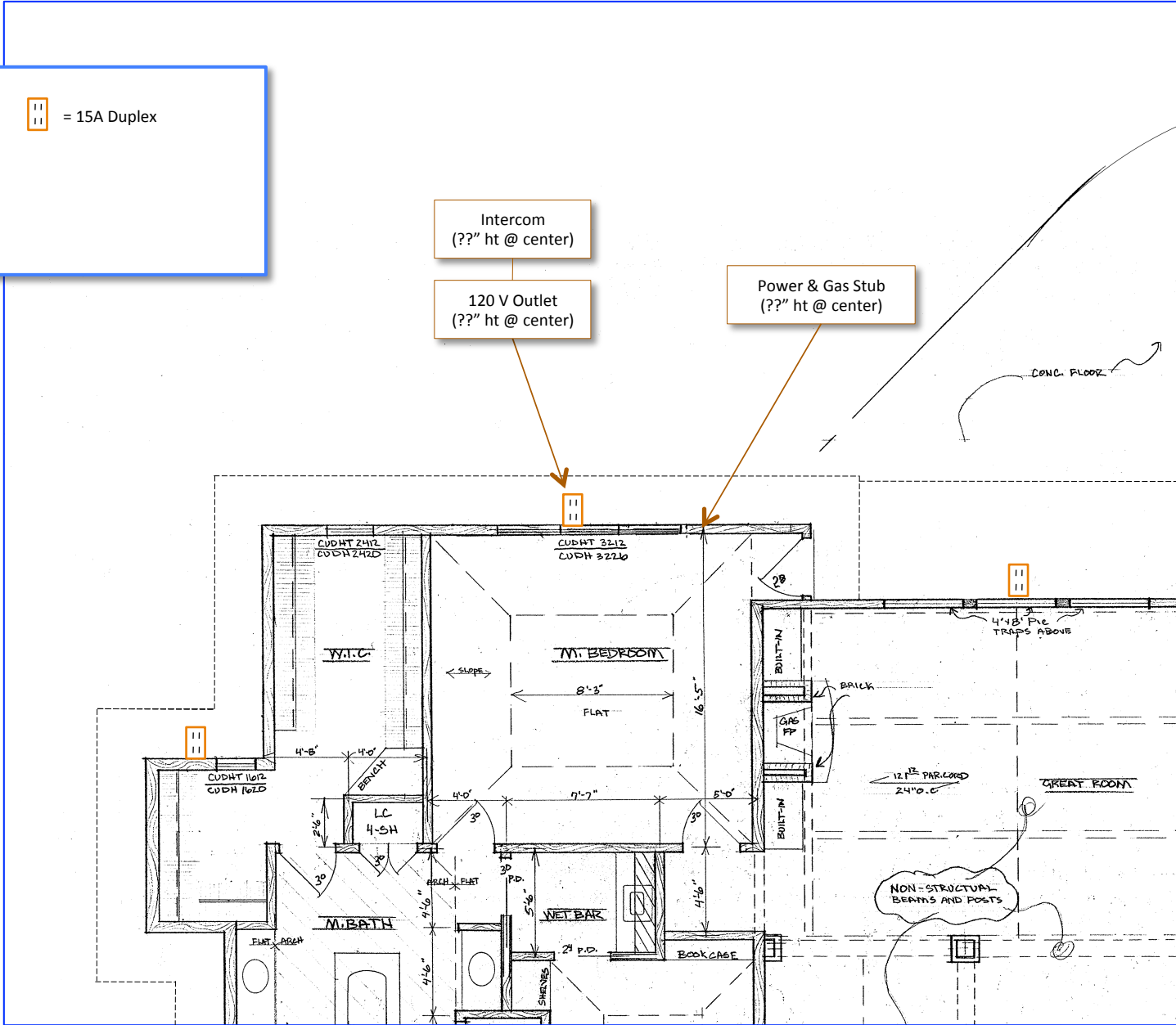
Northwest Lighting Power

 = 15A Duplex

Intercom
(??" ht @ center)

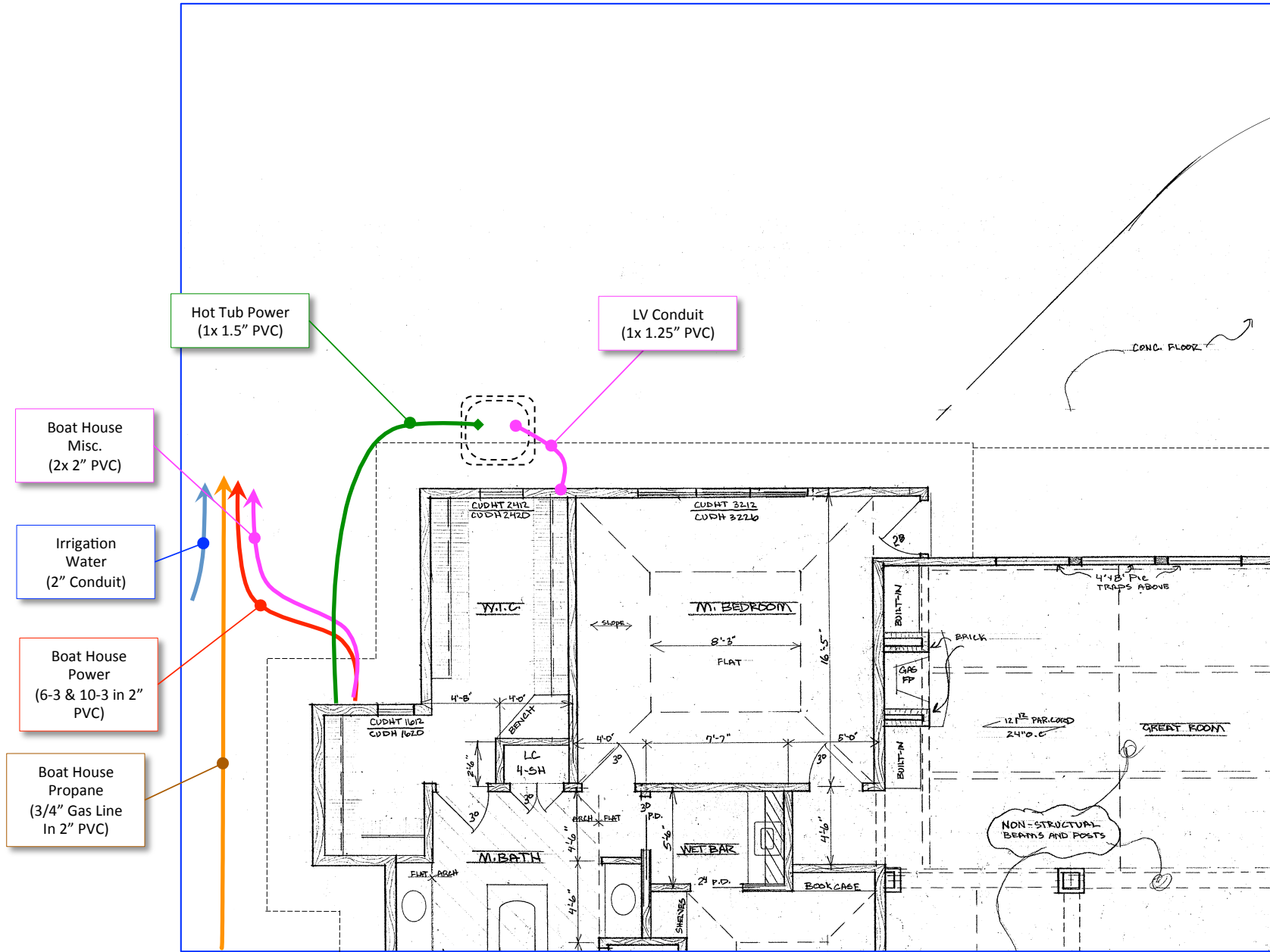
120 V Outlet
(??" ht @ center)

Power & Gas Stub
(??" ht @ center)



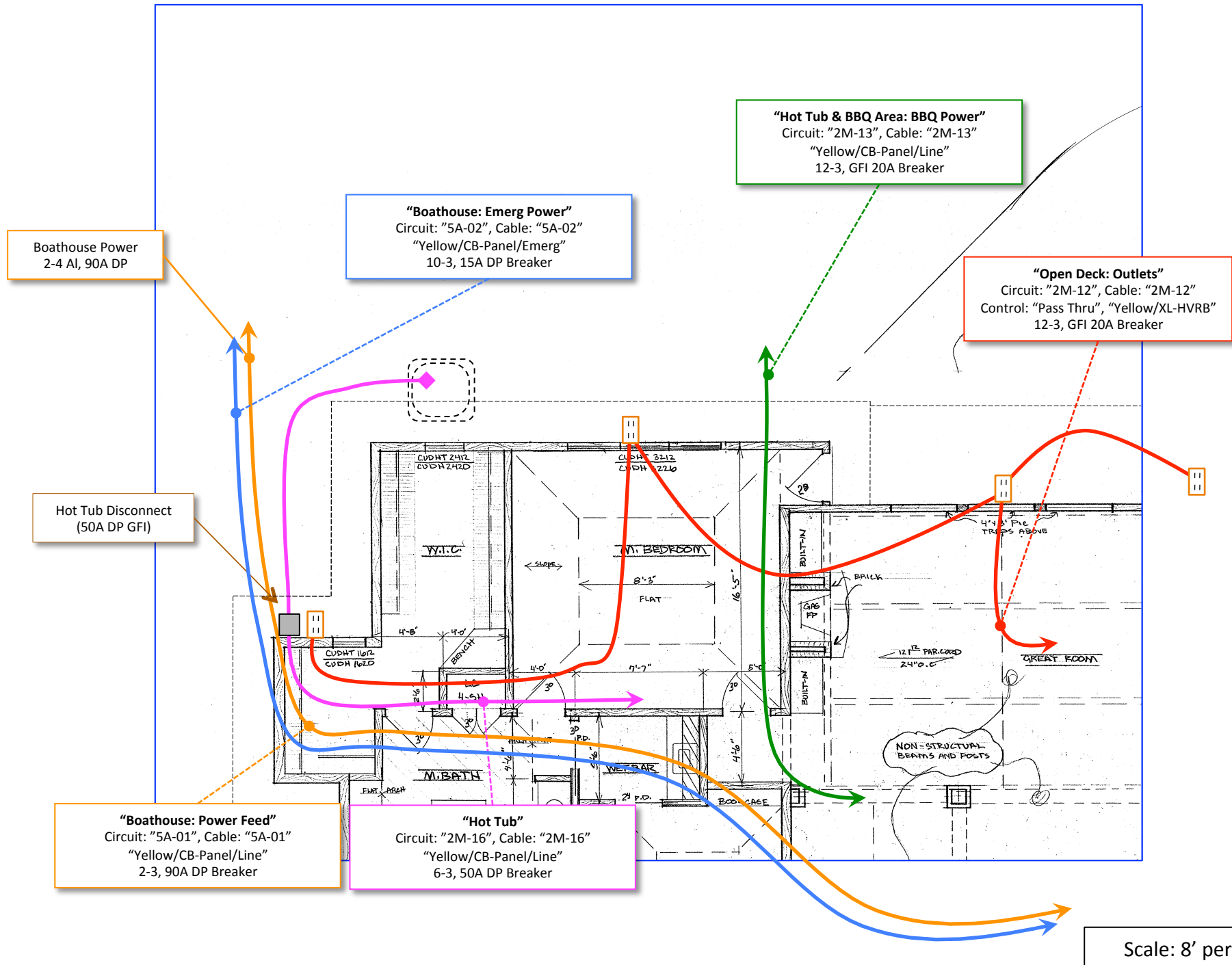
Southwest - Power

Scale: 8' per inch

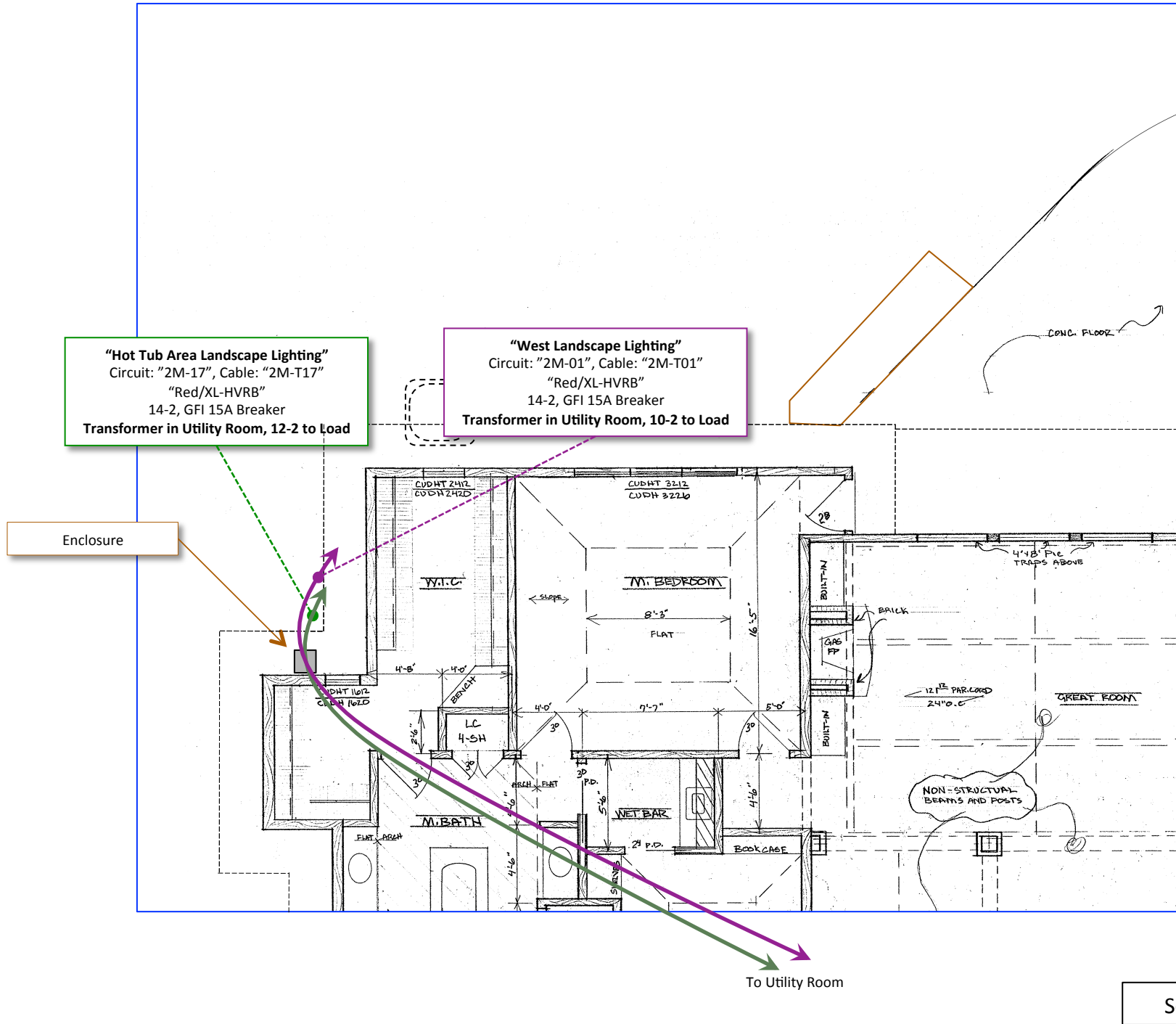


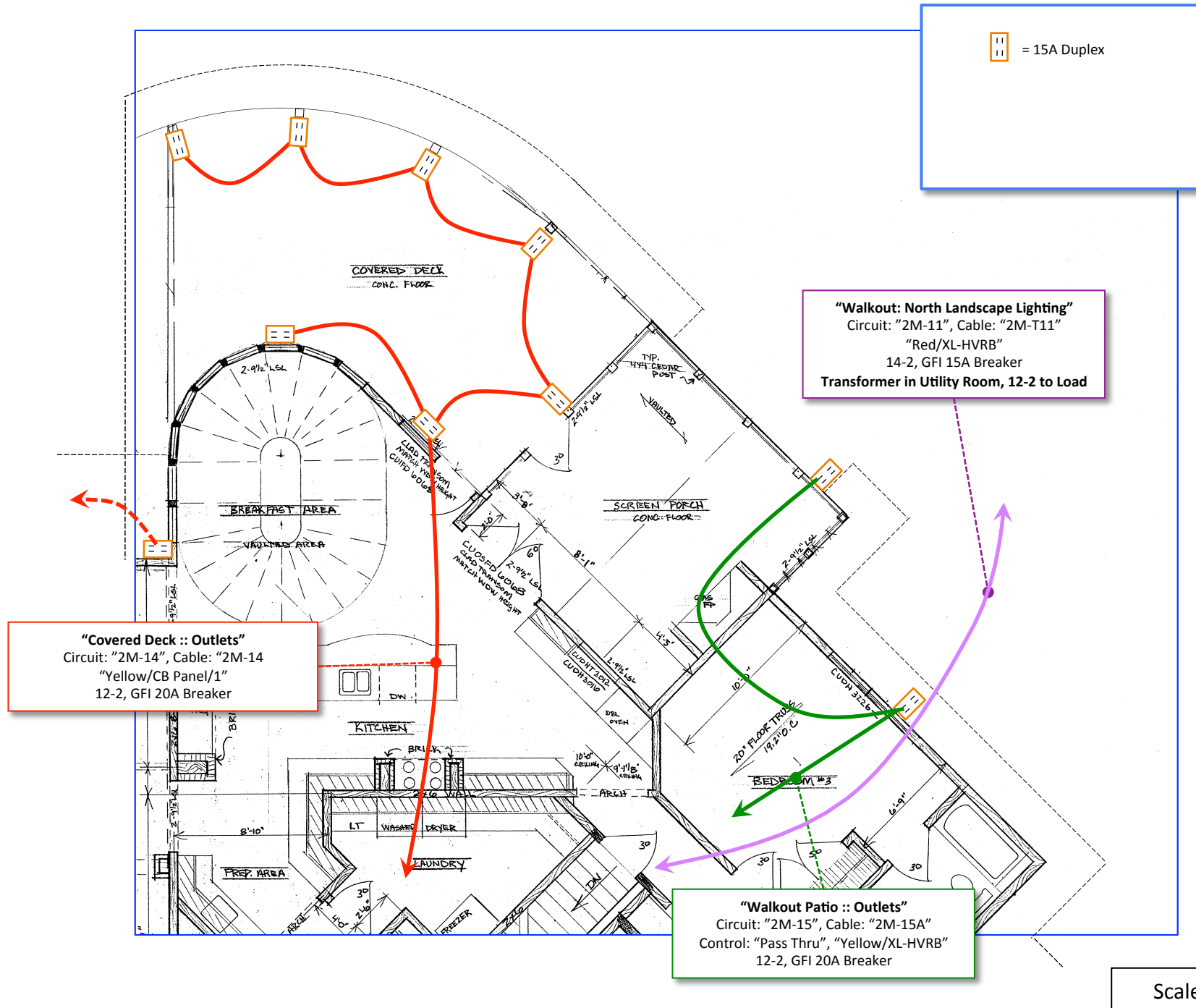
Southwest – Buried Conduits

Scale: 8' per inch

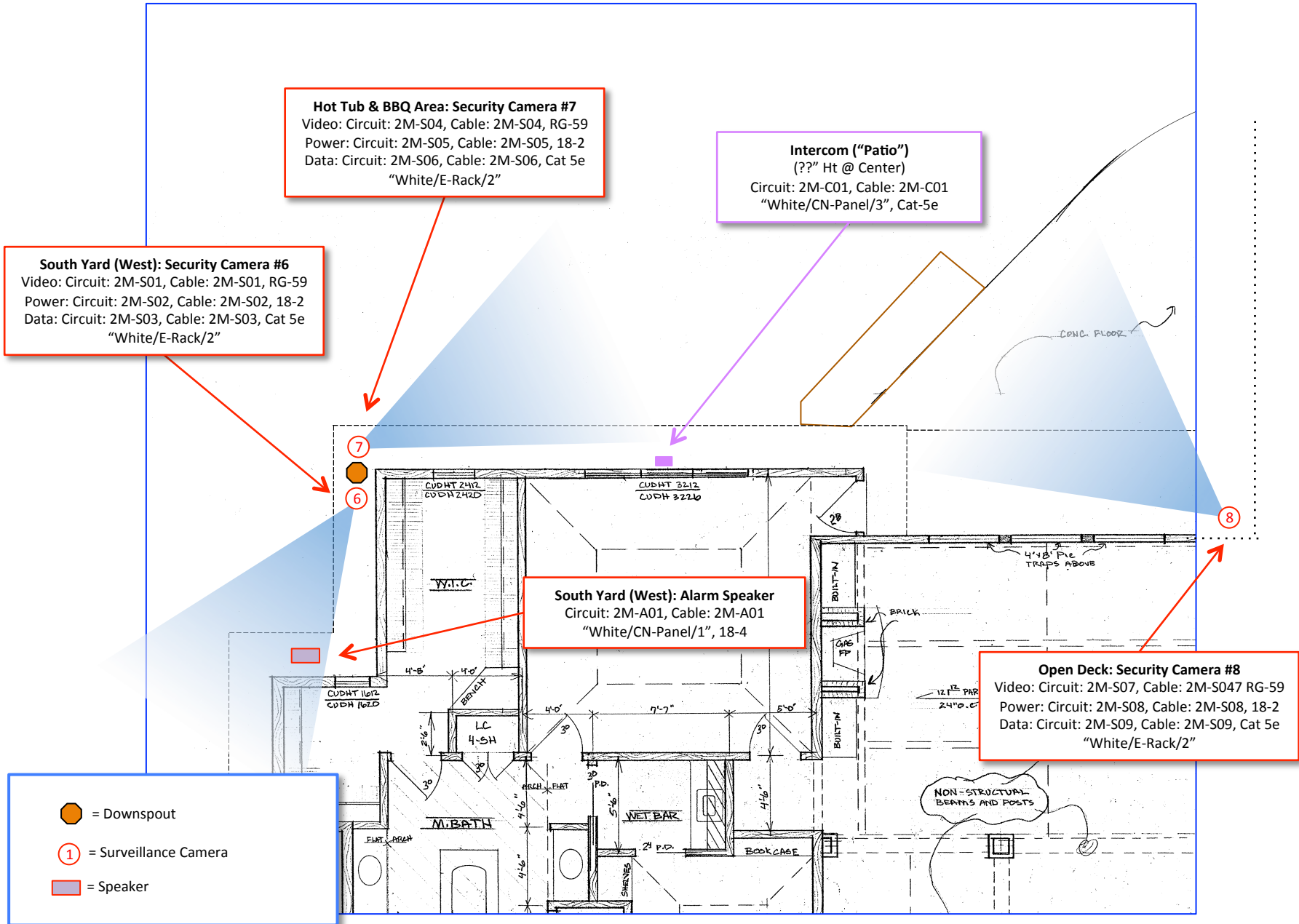


Southwest – Power Wiring

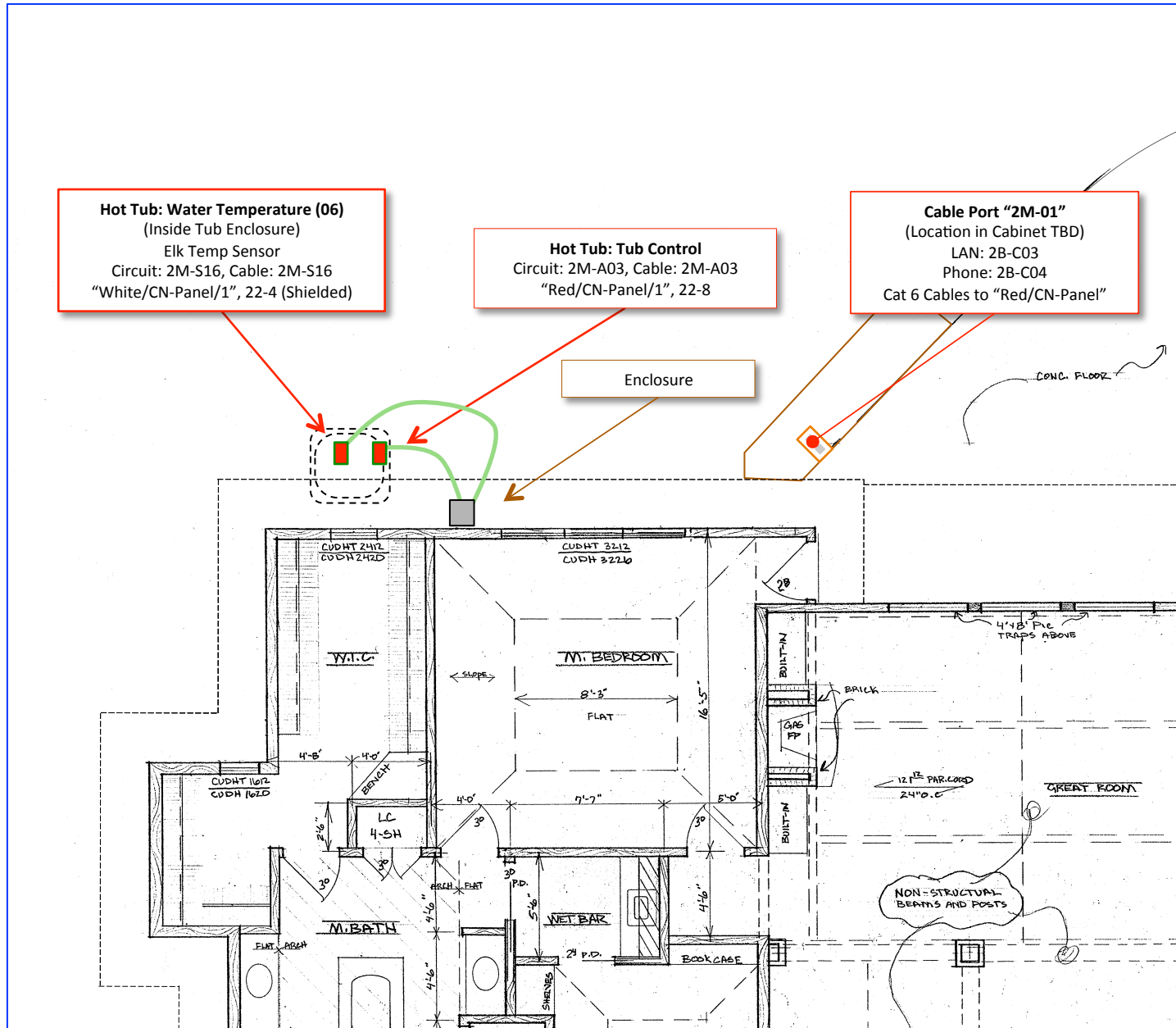




Northwest – Power Wiring

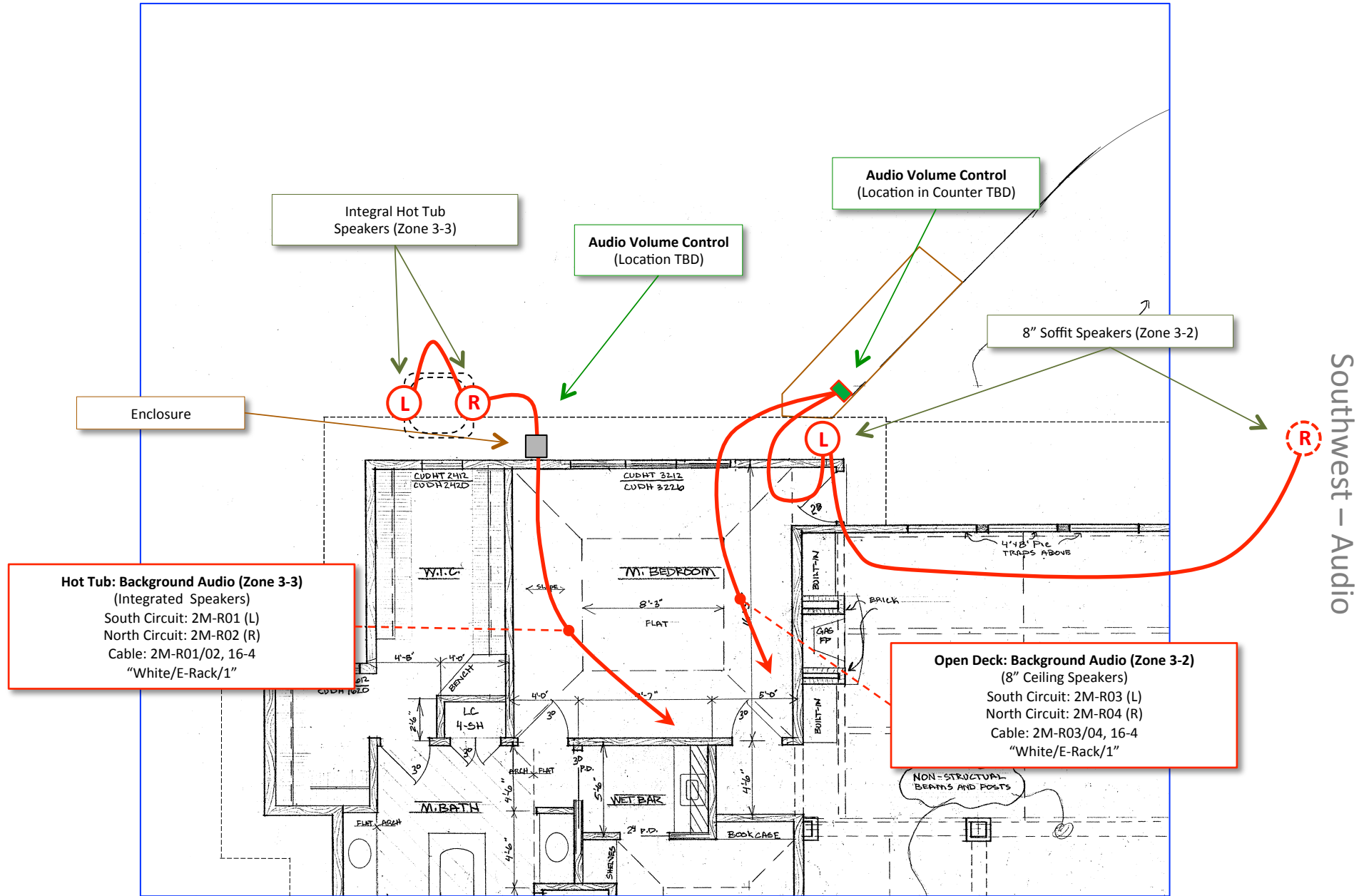


Scale: 8' per inch

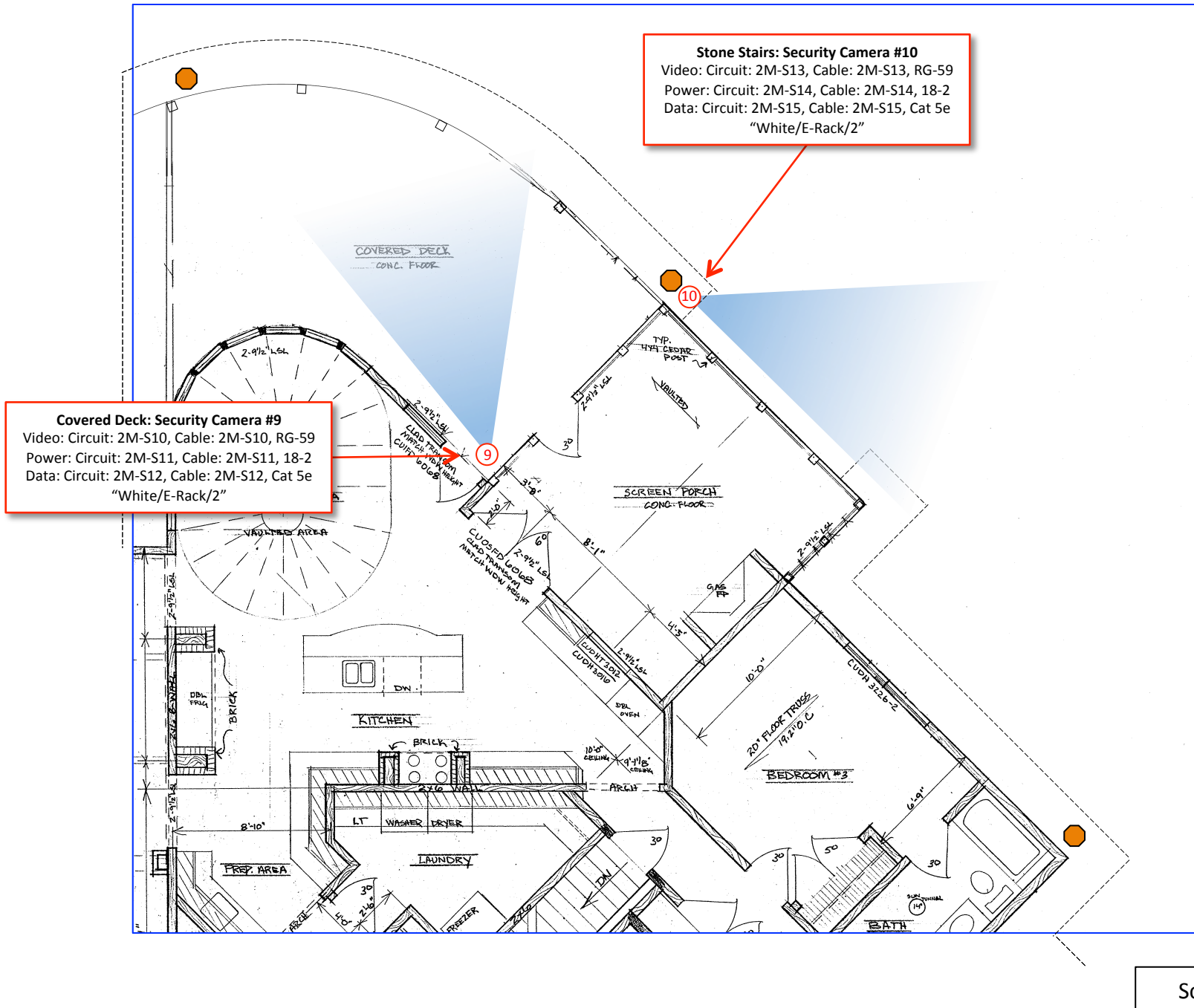


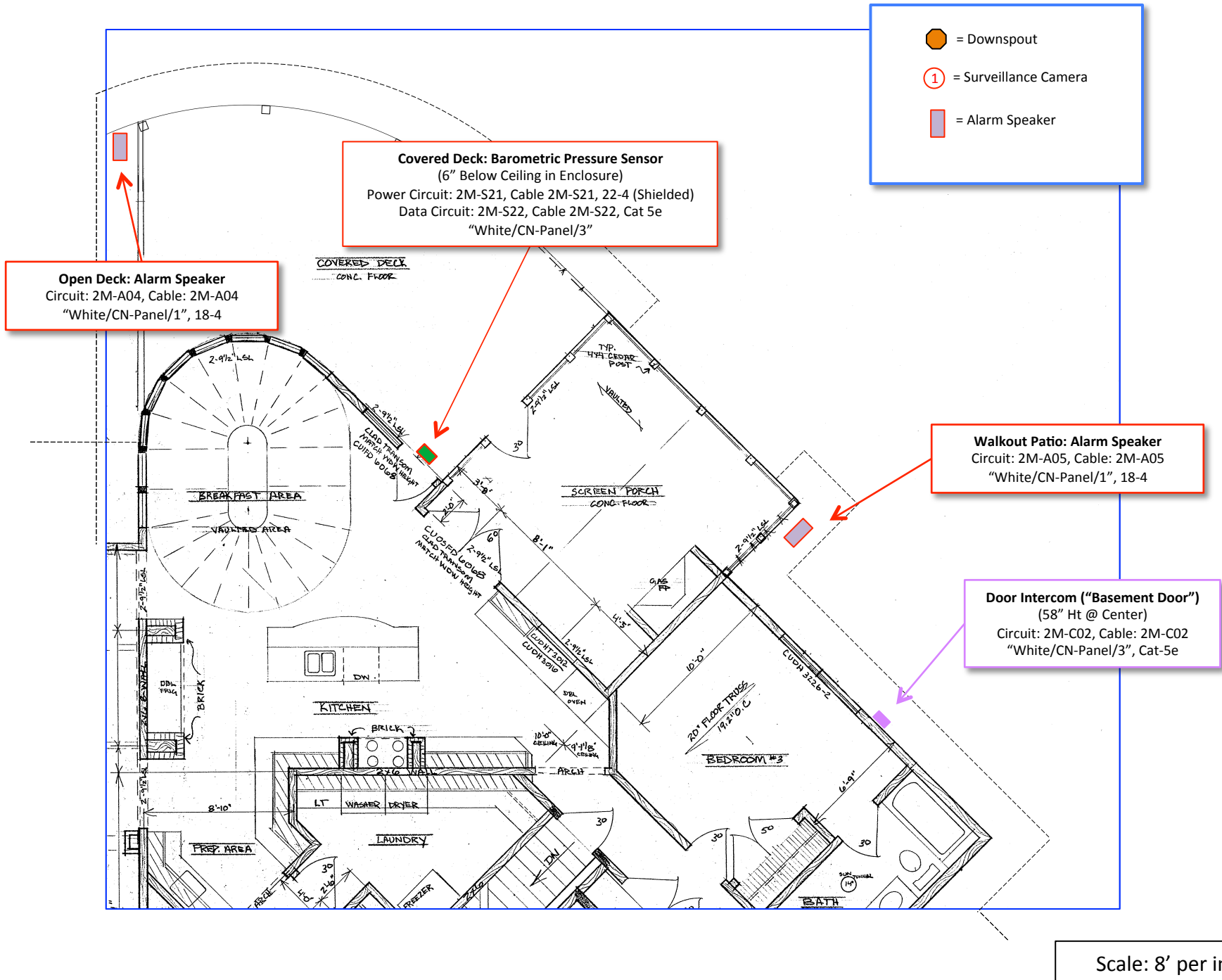
Southwest – Systems

Scale: 8' per inch

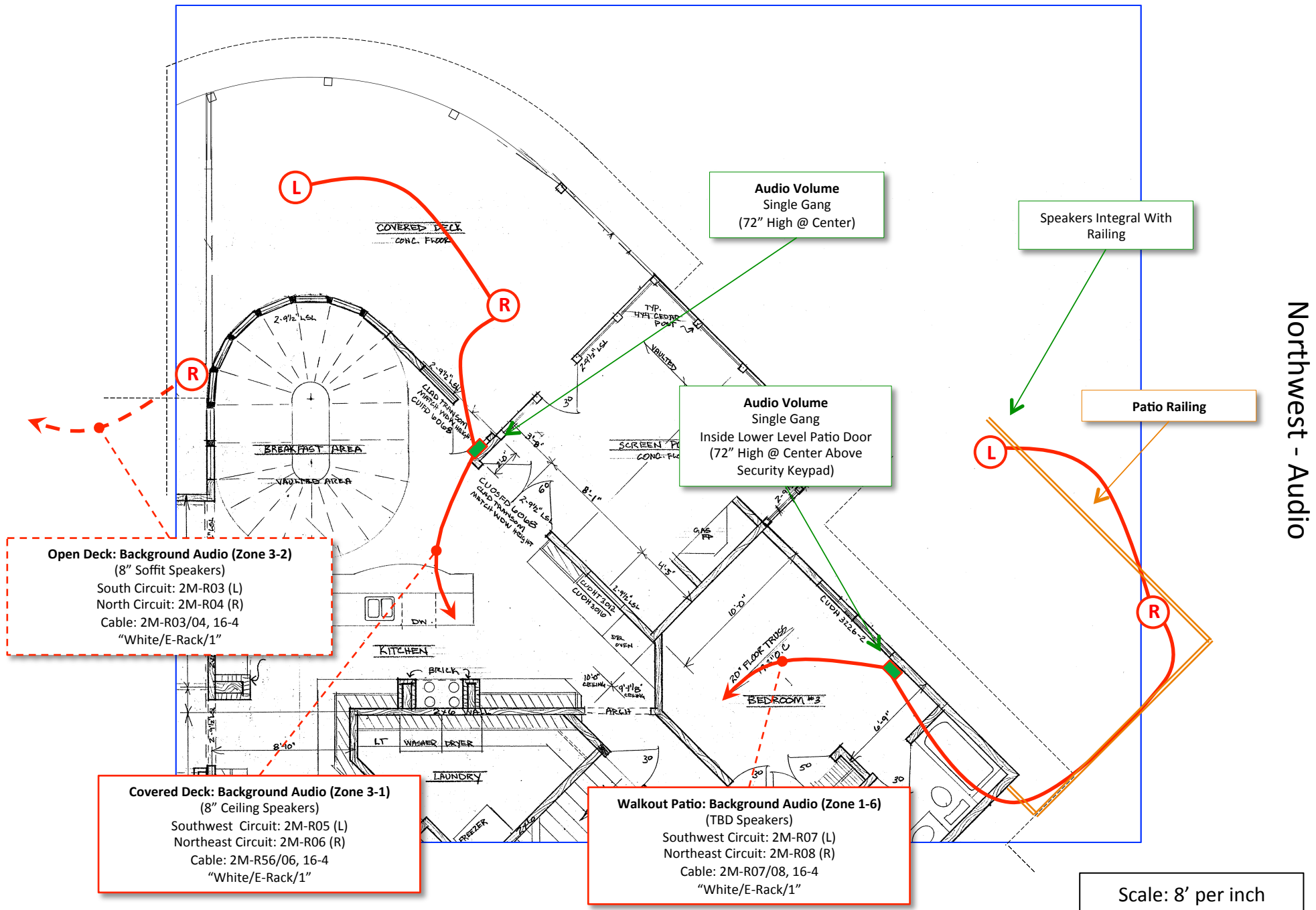


Scale: 8' per inch





Northwest - Systems



Open Deck: Background Audio (Zone 3-2)
 (8" Soffit Speakers)
 South Circuit: 2M-R03 (L)
 North Circuit: 2M-R04 (R)
 Cable: 2M-R03/04, 16-4
 "White/E-Rack/1"

Covered Deck: Background Audio (Zone 3-1)
 (8" Ceiling Speakers)
 Southwest Circuit: 2M-R05 (L)
 Northeast Circuit: 2M-R06 (R)
 Cable: 2M-R56/06, 16-4
 "White/E-Rack/1"

Walkout Patio: Background Audio (Zone 1-6)
 (TBD Speakers)
 Southwest Circuit: 2M-R07 (L)
 Northeast Circuit: 2M-R08 (R)
 Cable: 2M-R07/08, 16-4
 "White/E-Rack/1"

Audio Volume
 Single Gang
 (72" High @ Center)

Audio Volume
 Single Gang
 Inside Lower Level Patio Door
 (72" High @ Center Above Security Keypad)

Speakers Integral With Railing

Patio Railing

Scale: 8' per inch

Northwest - Audio